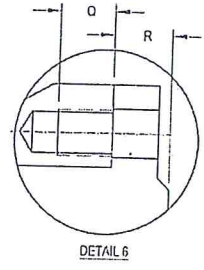
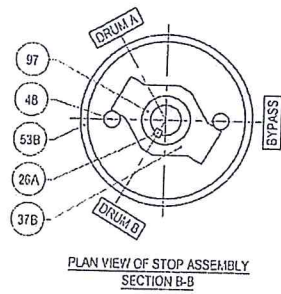
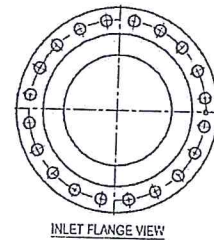
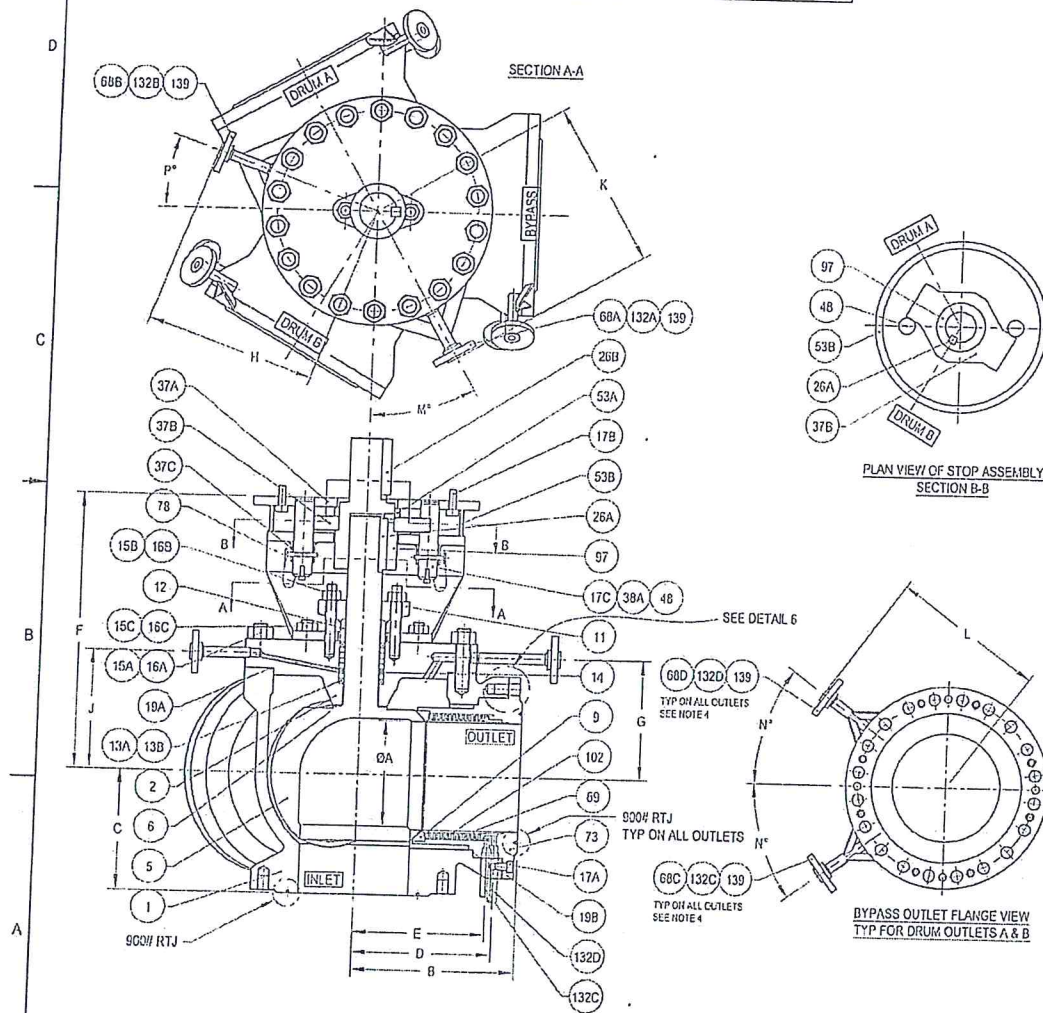


NPS	ØA	B	C	D	E	F	G	H	J	K	L	M <sup>Ø</sup>	N <sup>Ø</sup>	P <sup>Ø</sup>	Cv	WEIGHT
14	12.25	18.00	13.50	10.79	13.04	32.45	15.11	22.59	15.11	22.67	20.33	10	36	20	2370	5300
DN															Kv	
350	311	457	343	350	331	824	384	574	384	575	516	10	36	20	2015	2409



- NOTES:**
1. VALVE DESIGNED IN ACCORDANCE WITH ASME B16.34.
  2. ALL DIMENSIONS SHOWN IN PARENTHESIS ( ) ARE IN mm.
  3. FLANGED ENDS ARE MACHINED IN ACCORDANCE WITH ASME B16.5.
  4. PURGE CONNECTIONS:  
BETWEEN PURGE PIPES / VALVE: SOCKET WELD.  
BETWEEN PURGE PIPES / PURGE FLANGES: SOCKET WELD.  
ITEM 68A: BODY CAVITY PURGE FLANGE: 1" 1500 RTJ  
ITEM 132A: BODY CAVITY PURGE PIPE: 1" Ø SCH 160  
ITEM 68B: LANTERN RING PURGE FLANGE: 3/4" 1500 RTJ  
ITEM 132B: LANTERN RING PURGE PIPE: 3/4" Ø SCH 160  
ITEM 68C: BELLOWS O.D. PURGE FLANGE: 3/4" 1500 RTJ  
ITEM 132C: BELLOWS O.D. PURGE PIPE: 3/4" Ø SCH 160  
ITEM 68D: BELLOWS I.D. PURGE FLANGE: 3/4" 1500 RTJ  
ITEM 132D: BELLOWS I.D. PURGE PIPE: 3/4" Ø SCH 160
  5. VALVE WEIGHT: 5300 LBS (2409 KG)  
ACTUATOR WEIGHT: 618 LBS ( 372 KG)  
TOTAL WEIGHT: 6118 LBS (2781 KG)

MATING FLANGE BOLTING INFORMATION TABLE							
SIZE / CLASS	TYPE OF FACING	SIZE OF STUDS	QTY OF INLET STUDS	SUGGESTED STUDS LENGTH FOR INLET (in)	QTY OF OUTLET STUDS	SUGGESTED STUDS LENGTH FOR OUTLET (in)	Ø (in) R (in)
14-500	RTJ	1-1/2" - 8 UN	20	8.50	20	10.00	1.60 1.90

10	14	5740.2 KPa(g) @ 513 °C	1150 KPa(g) @ 513 °C
ITEM	NPS	DESIGN CONDITIONS	OPERATING CONDITIONS

SCALE	NTS	NPS	14 (DN 350)	CLASS	900 (PN 150)
DWG NUMBER				REV A	
				SHT 1 OF 4	